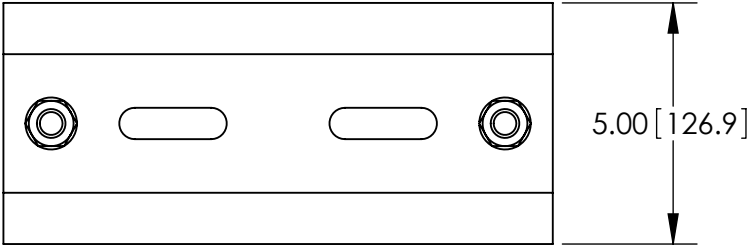
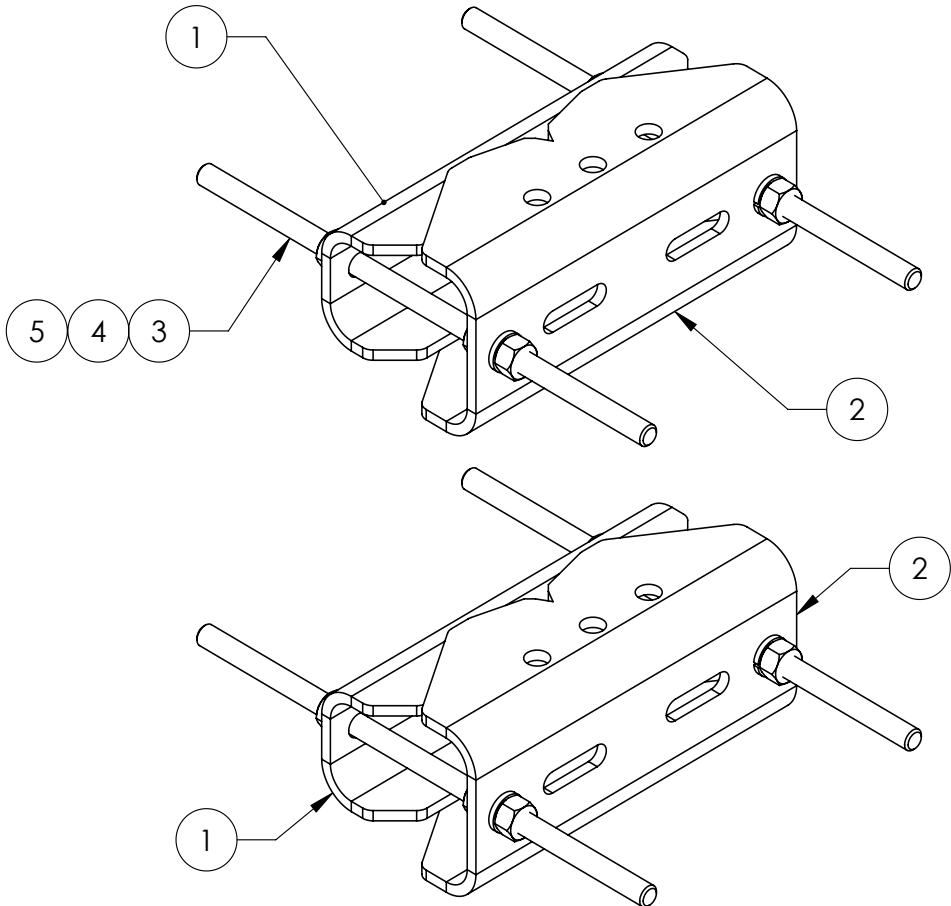
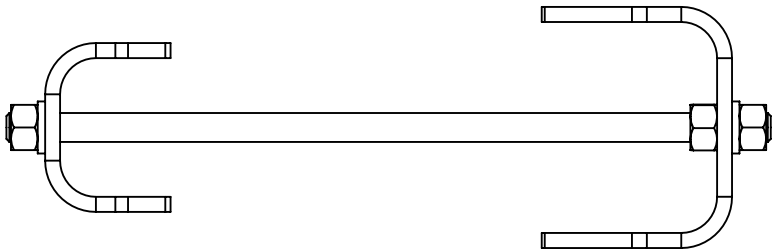
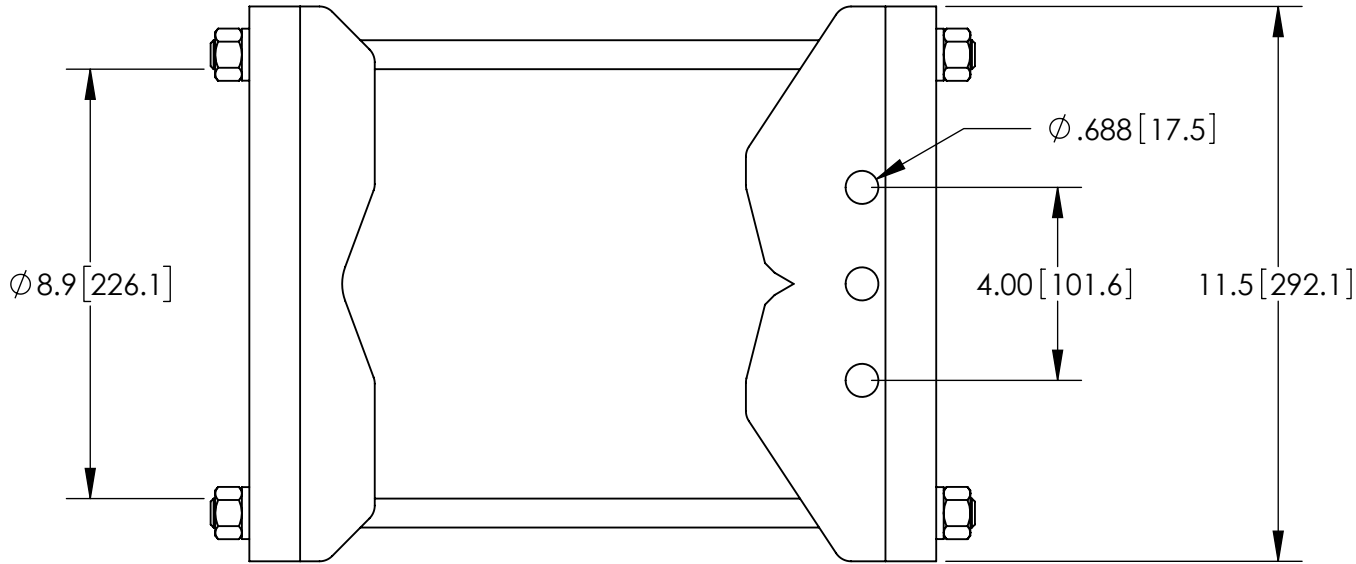


NOTES:  
1.0 ALL METRIC DIMENSIONS ARE IN BRACKETS.

REVISIONS				
REV.	ECN	DESCRIPTION	BY	DATE
K		UPDATE ITEM 1	ACG	04/03/03
M		UPDATE BOM	ACG	07/07/03
N		UPDATE ITEM 11	ACG	01/14/04
P		UPDATE DESIGN	AW	10/20/04
R		REPLACE SMU2080.05 WITH SMU2080.06	ACG	03/31/08
T		UPDATE SMU2080.06 AND SMU2080.04	MSM	05/06/09
U		UPDATE ISO VIEW	MSM	09/25/12
V	8000030482	UPDATED DESIGN & FORMAT	RJC	06/25/18
W	8000031008	REPLACED 3/4 HDW WITH 5/8 HDW	RJC	08/23/18



ITEM	PART NO.	DESCRIPTION	QTY.	WEIGHT	NOTE NO.
1	MTC397521	CLAMP, BACK	2	6.94 LBS	
2	MTC397522	CLAMP, FRONT MOUNTING	2	10.02 LBS	
3	MT-382-16	5/8" X 16" THREADED ROD	4	1.28 LBS	
4	GN05	5/8" GALV HEX NUT	12	0.08 LBS	
5	GWL05	5/8" GALV LOCK WASHER	8	0.03 LBS	



These drawings and specifications are proprietary property and may be used only for the specific purpose authorized in writing.  ALL DIMENSIONS ARE IN INCHES U.O.S. TOLERANCES UNLESS OTHERWISE SPECIFIED: .X = ± .06 ANGLES ±2° .XX = ± .03 FRACTIONS ±1/32 .XXX = ± .010 REMOVE BURRS AND BREAK EDGES .005	DRAWN BY: ACG	SHEET: 1 of 1	PART NUMBER: FM-SMU2080
	CHECKED BY: MKV	SCALE: NTS	DESCRIPTION: UNIVERSAL SADDLE MOUNT
	DATE: 05/20/22	MATERIAL: ASTM A1011/A1018	DRAWING TYPE: ASSEMBLY DRAWING
	REVISION: W	FINISH: ASTM A123	
DO NOT SCALE THIS PRINT		WEIGHT: 47.47 LBS	